

BC-6800Plus

Auto Hematology Analyzer

Principles

SF Cube\* method to count WBC, 5-part diff, NRBC, RET and PLT-O  
Focusing Flow-DC method for RBC and PLT  
Cyanide free reagent for hemoglobin test  
\*S: Scatter; F: Fluorescence; Cube: 3D analysis

Parameters

37 Reportable parameters (whole blood): WBC, Lym%, Mon%, Neu%, Bas%, Eos%, IMG%, Lym#, Mon#, Neu#, Eos#, Bas#, IMG#; RBC, HGB, HCT, MCV, MCH, MCHC, RDW-CV, RDW-SD, NRBC#, NRBC%; PLT, MPV, PDW, PCT, P-LCR, P-LCC, RET%, RET#, RHE, IRF, LFR, MFR, HFR, IPF  
42 Research parameters (whole blood): HFC#, HFC%, RBC-O, PLT-O, PLT-I, WBC-O, WBC-D, TNC-D, IME%, IME#, H-NR%, L-NR%, NLR, PLR, WBC-N, TNC-N, InR#, InR%, Micro#, Micro%, Macro#, Macro%, RPI, H-IPF, IPF#, MRV, FRC#, FRC%, PDW-SD, Neu-X, Neu-Y, Neu-Z, Lym-X, Lym-Y, Lym-Z, Mon-X, Mon-Y, Mon-Z, SRBC, LRBC, SMCV, LMCV  
7 Reportable parameters (body fluid): WBC-BF, TC-BF#, MN#, MN%, PMN#, PMN%, RBC-BF  
11 Research parameters (body fluid): Eos-BF#, Eos-BF%, Neu-BF#, Neu-BF%, HF-BF#, HF-BF%, RBC-BF, LY-BF#, LY-BF%, MO-BF#, MO-BF%

2 Histograms for RBC and PLT  
3 Three-dimension scatter grams: DIFF, WNB, RET  
5 Two-dimension scatter grams: DIFF, WNB, RET, RET-EXT, PLT-O

Mode

CBC, CBC+DIFF, CBC+DIFF+RET, CBC+RET, RET

Data storage capacity

Up to 10,000 results including numeric and graphical information

Operating environment

Temperature: 15℃~32℃  
Humidity: 30%~85%

Performance

Parameter	Linearity Range	Precision	Carryover
WBC	0-500×10 <sup>9</sup> /L	≤2.5% (≥4×10 <sup>9</sup> /L)	≤1.0%
RBC	0-8.60×10 <sup>12</sup> /L	≤1.5% (≥3.5×10 <sup>12</sup> /L)	≤1.0%
HGB	0-260g/L	≤1.0% (110-180g/L)	≤1.0%
HCT	0-75%	≤1.5% (30%-50%)	≤1.0%
PLT	0-5000×10 <sup>9</sup> /L	≤4.0% (≥100×10 <sup>9</sup> /L)	≤1.0%
RET#	0-0.8×10 <sup>12</sup> /L	≤15% (RBC≥3×10 <sup>12</sup> /L; 1%≤RET%≤4%)	/

Sample volume

Whole blood (Autoloader)	190uL
Whole blood(Open vial)	130uL
Predilute (Open vial)	40uL
Body fluid (Open vial)	130uL

Throughput

Up to 200 samples per hour (CBC+DIFF)  
Up to 120 samples per hour (CBC+DIFF+RET)  
Up to 120 samples per hour (RET)  
Up to 40 samples per hour (Body fluid)

Loading capacity

Up to 100 sample tubes



BC-6800Plus

Auto Hematology Analyzer

More than Fast



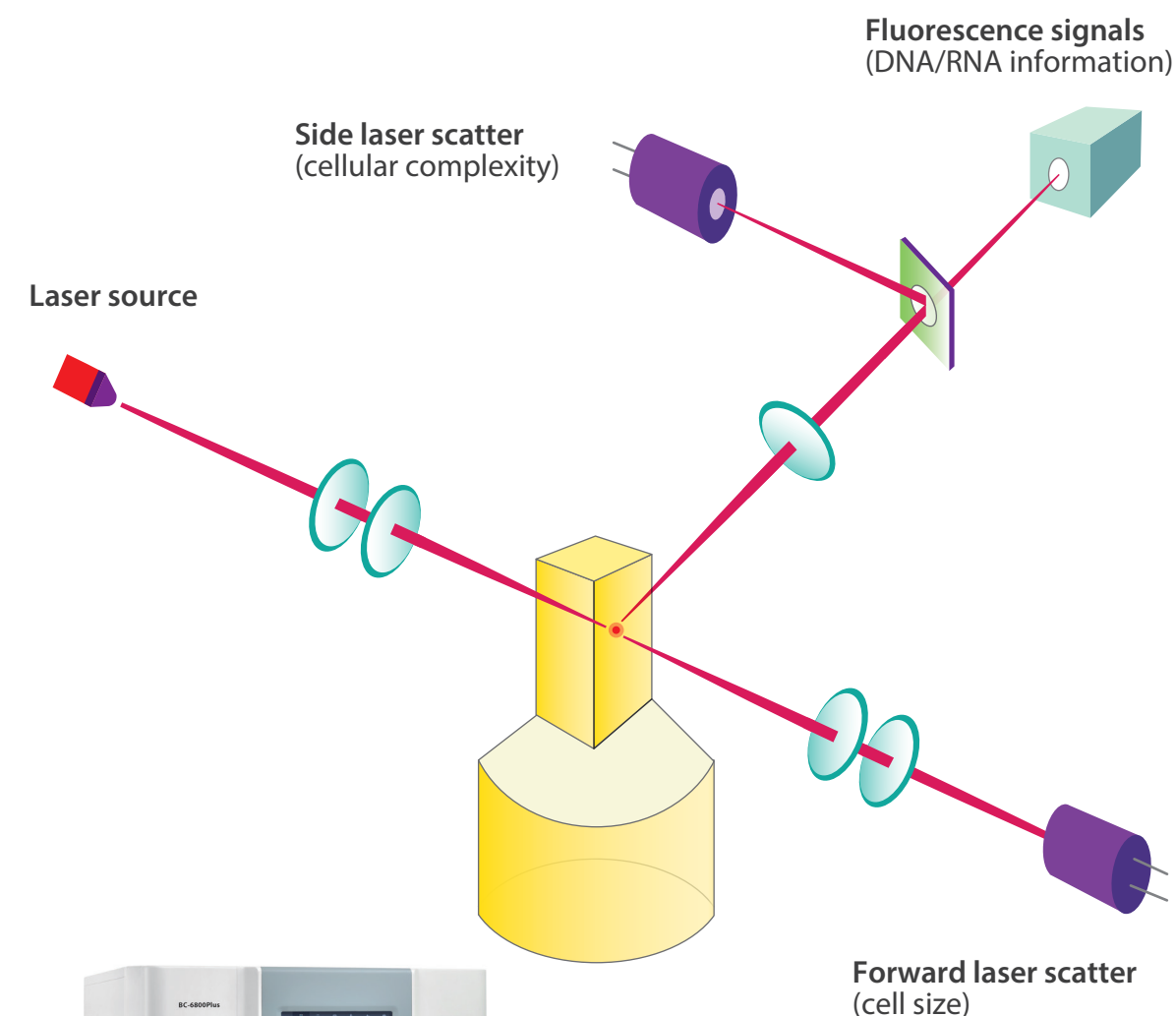
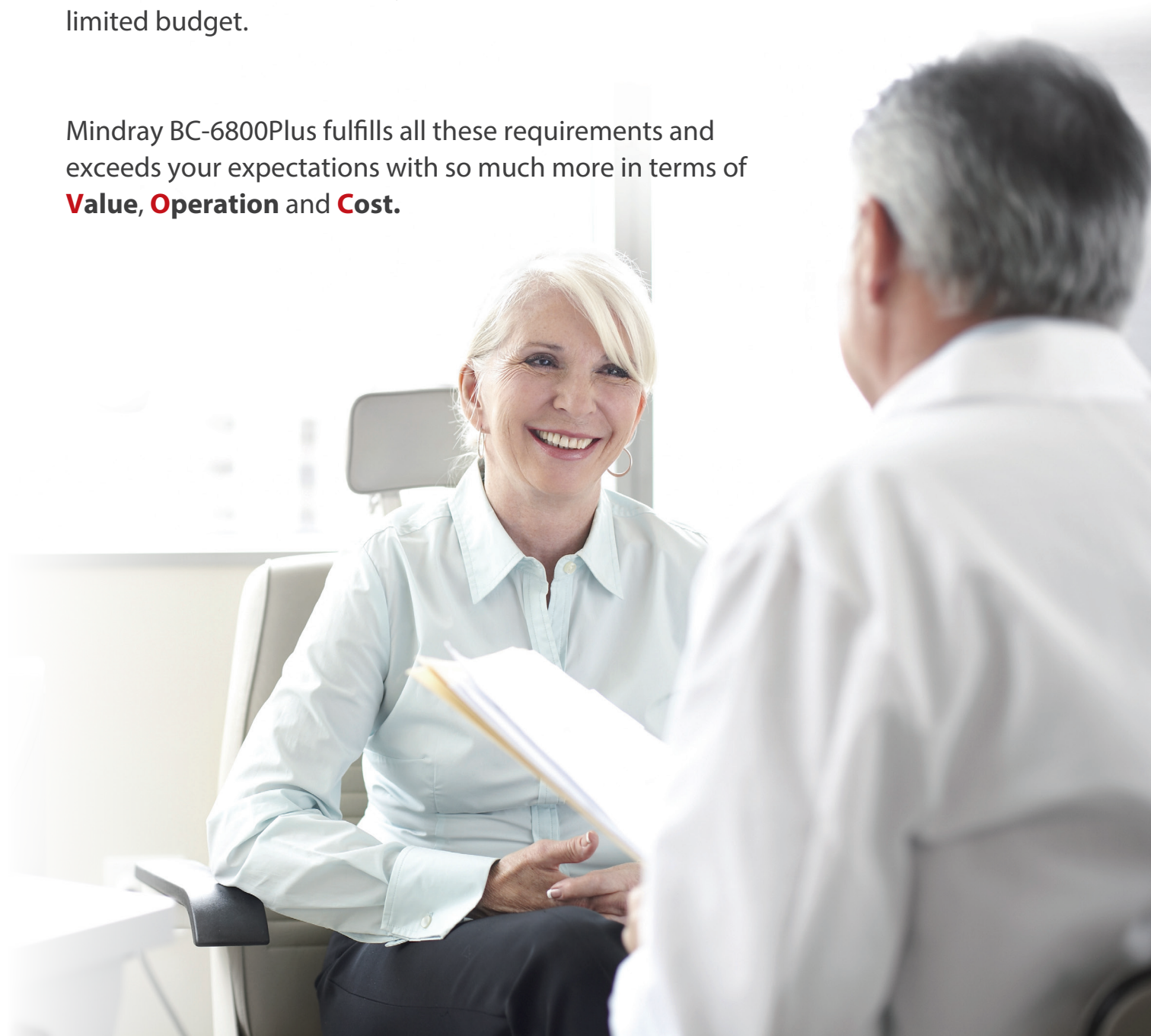




Cost

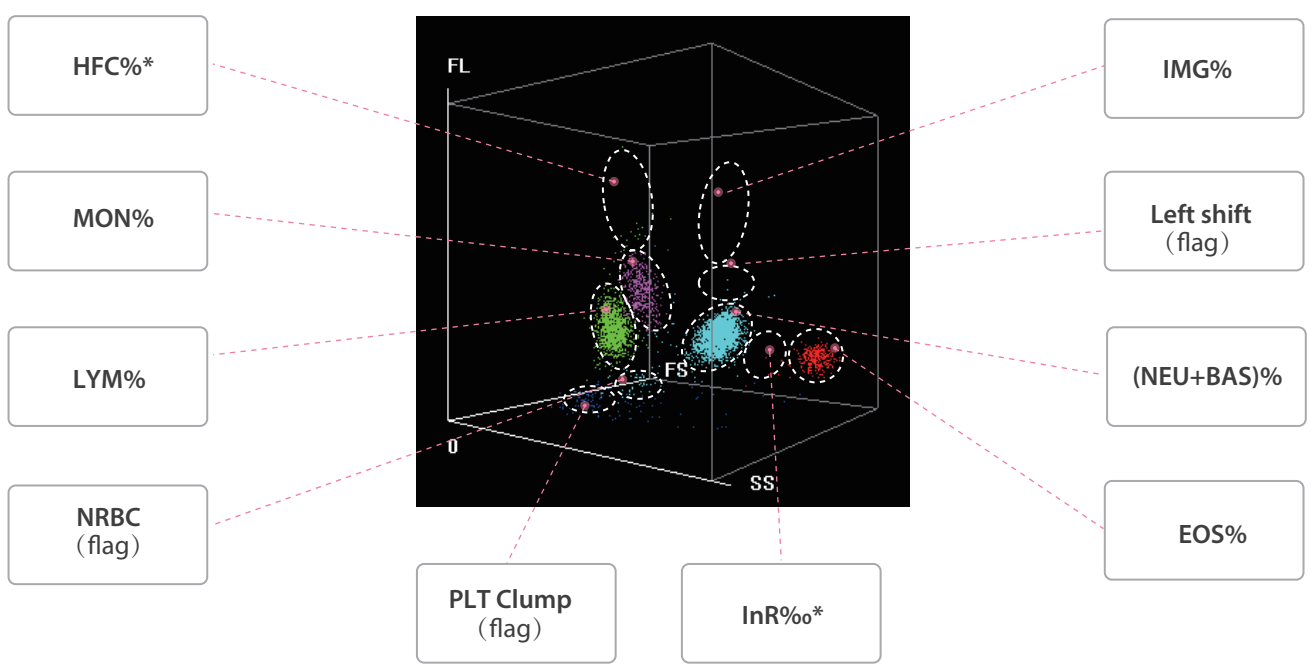
At Mindray, we seek to understand the needs of every customer, and deliver tailor-made solutions. Before designing any product, we listen to the **Voice Of Customers** and bear in mind the challenges they face. In today's laboratories, lab managers are looking for an analyzer with greater clinical values, such as higher flagging efficiency to reduce the ratio of microscopic examination, NRBC/RET/body fluid results generated in a high-speed system, among others, all within limited budget.

Mindray BC-6800Plus fulfills all these requirements and exceeds your expectations with so much more in terms of **Value, Operation and Cost.**



With the newly designed optics and reagent systems, the SF Cube technology can help doctors to better differentiate the clusters of cells, which is the key to revealing more abnormal cells.

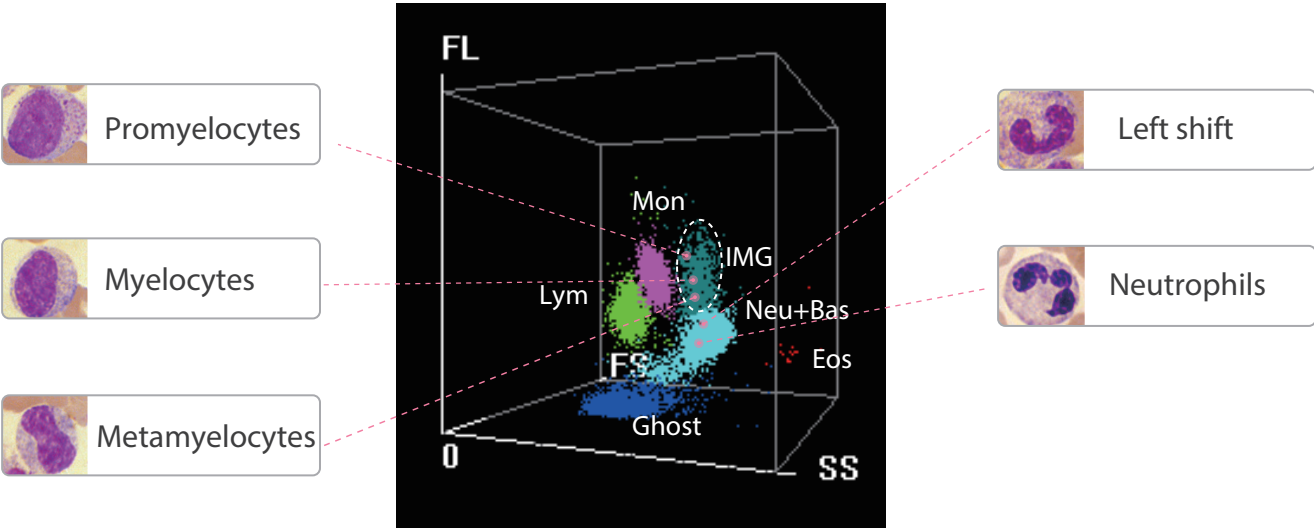
# DIFF Channel



In DIFF scattergram, BC-6800Plus not only gives WBC 5-part differential results (with immature granulocyte), but also brings research parameters such as HFC (Blast & Atypical Lymphocyte), InR (information about malaria) and flags for Band, NRBC, PLT clump and Atypical Lymphocyte.

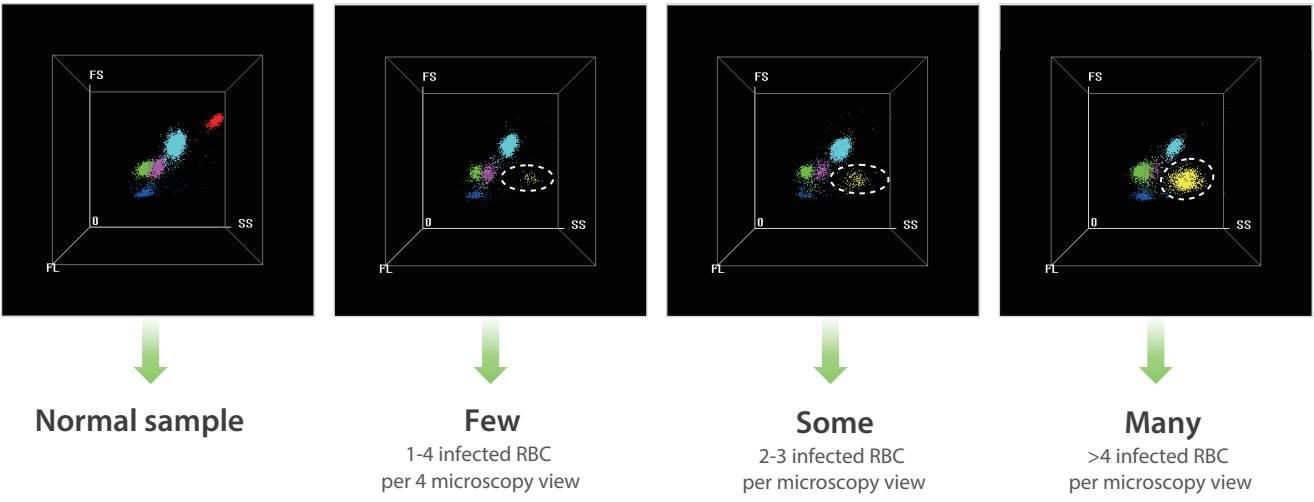
HFC\*(#, %) parameters represent high population of fluorescent cell, such as Blasts and Atypical Lymphocytes.

IMG(#, %) parameters provide information about immature granulocytes, including Promyelocytes, Myelocytes, Metamyelocytes, Immature Eosinophils and Immature Basophils.



\*For research use only

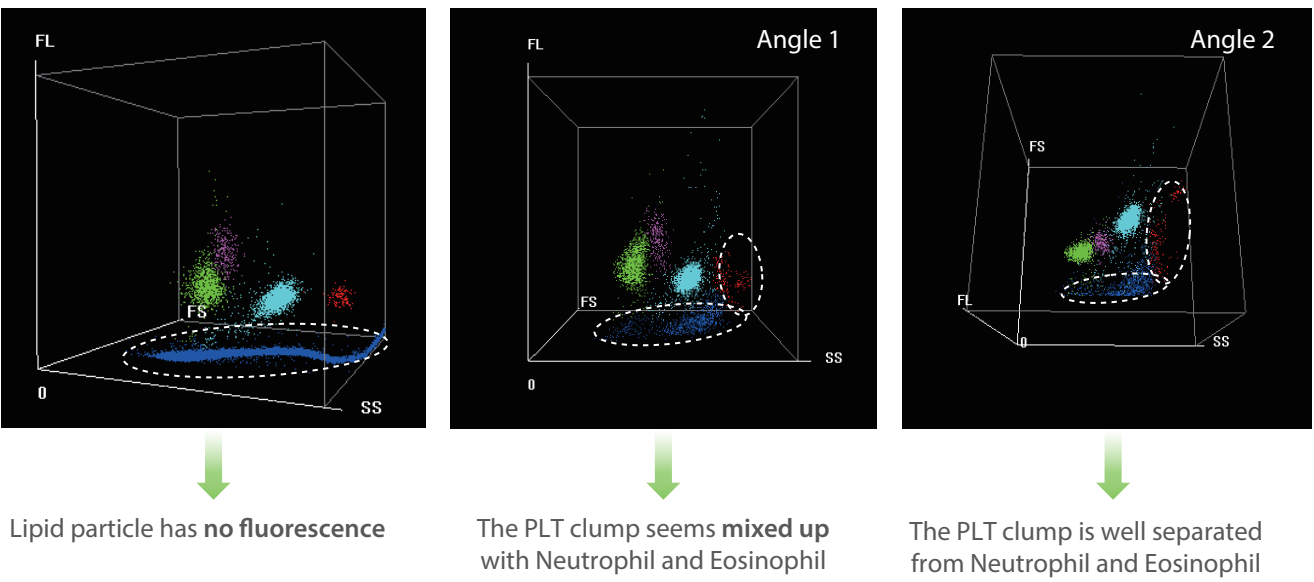
# Malaria screening



*Note: The yellow scatters are just for highlight.*

BC-6800Plus provides a dedicated flag called "infected RBC?", and "InR\*(#,%) "parameters to represent the number and ratio of the infected red blood cells in the sample respectively. BC-6800Plus users can obtain information about the possible presence of plasmodium parasite, the causative agent of malaria infection. With the rising number of red blood cells with malaria parasites, the number of dots in the "InR" area increases proportionately. This creates the possibility to not only screen but also judge the severity of malaria infection.

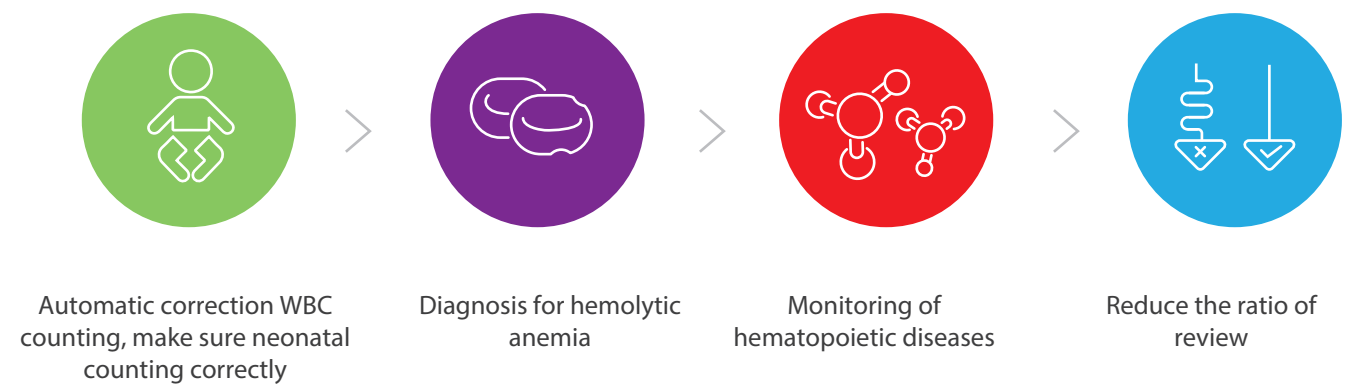
# Interference prevention



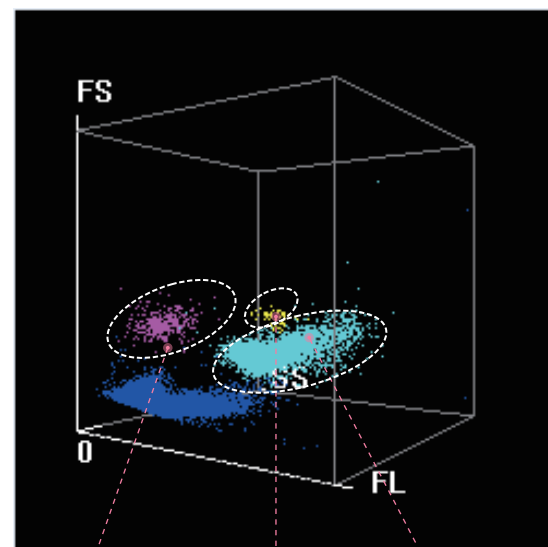
In DIFF scattergram, WBCs are dyed, but not lipid particles, by fluorescence, which prevents interference and ensures more accurate WBC results. With information obtained through the 3D analysis, PLT clumps are well separated from each cluster of WBCs.



## NRBC results in every CBC



## WNB Channel



In WNB scattergram, BC-6800Plus provides NRBC, Basophils and WBC-N\* results. It means that the actual number of NRBCs can be measured in routine CBC, if they are present in the sample. Basophils are counted in this counting channel with NRBC results.

Basophil and NRBC results are generated on BC-6800Plus without extra reagent or cost.

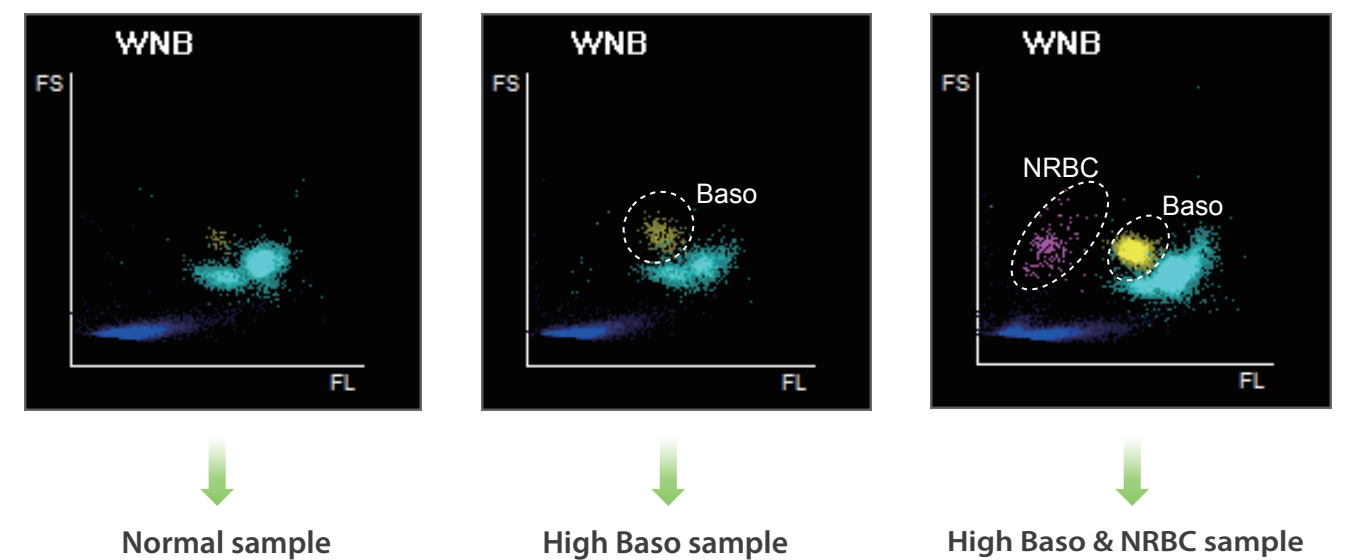
NRBC

Baso%

WBC-N \*

*\*For research use only*

NRBCs do not usually exist in the peripheral blood except that of newborn children. Detection of NRBCs is essential in diagnosing and monitoring the hematopoietic diseases.



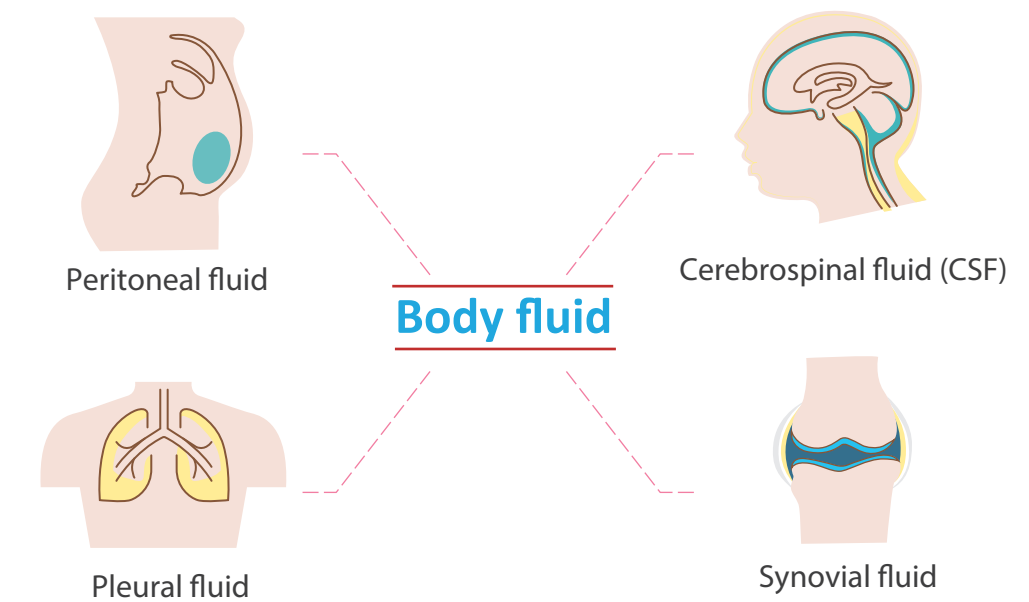
BC-6800Plus provides accurate results on samples even with high level of Basophils and NRBCs.



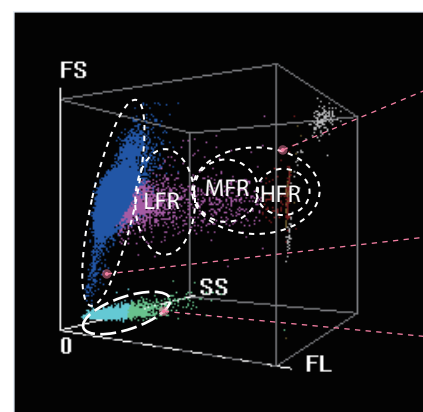


## Body fluid

Besides blood specimen, BC-6800Plus also has body fluid test function without requiring dedicated reagent. The various types of body fluids include Peritoneal fluid, Pleural fluid, Cerebrospinal fluid (CSF) and Synovial fluid.



## RET Channel



IRF

RBC-O\*

PLT-O\*

With the SF Cube cell analysis technology, Reticulocytes are differentiated from the other red cells by their reaction with fluorescent stain. Besides the traditional parameters such as RET# and RET%, BC-6800Plus provides data concerning immature reticulocytes (IRF), which can assist in early diagnosis of anemia and monitoring the bone marrow response to therapy.

*\*For research use only*





## Applicable to variety of tubes

To cater to customer's diversified needs, different types of blood collection tubes can be used on BC-6800Plus, including regular whole blood vacuum tube, capillary blood microtainer tube and Sarstedt tube.



Operation

Cost



## Less testing time

BC-6800Plus can load up to 100 samples at a time and offers a throughput of up to 200 tests per hour.



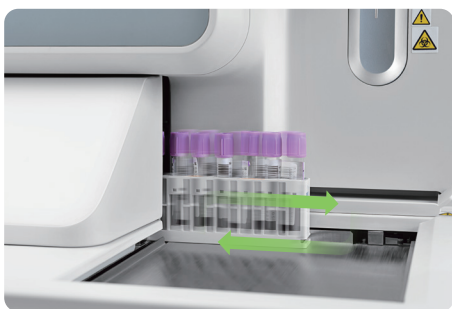
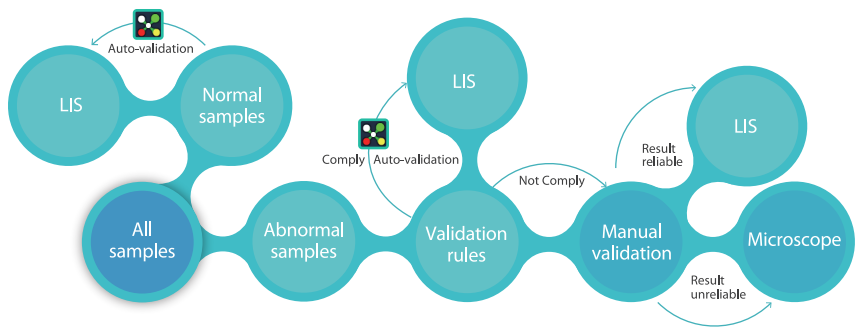
## Touch screen

BC-6800Plus can work standalone and has touch screen for basic operation by more intuitive software.

## More Intuitive labXpert software

LabXpert is a standard configuration of BC-6800Plus for professional data analysis.

The labXpert software optimizes functions to simplify your workflow for data analysis including improving re-exam efficiency, auto-validation for normal samples; it also provides more intuitive interface for you to review and validate pathological samples.



## Automatic Rerun & Reflex

Should the sample results trigger the criteria, the autoloader of BC-6800Plus can return the sample racks for an automatic rerun or reflex check.

## Easy maintenance

The only maintenance for end user is daily shut down by probe cleanser or probe cleanser cleaning once per day (if not shut down). The "auto-protect" program reminds operators when maintenance is needed (if not shut down).

