

# SPIFE TOUCH™



**HELENA**  
LABORATORIES

# INTRODUCING

# SPIFE TOUCH™

## The Nucleus of the New Helena Touch Electrophoresis System

**Smaller. Faster. Touch screen.**

**Versatile.** Those are the design specs behind all the Touch Series analyzers. SPIFE Touch builds on the proven track record of the SPIFE agarose gel electrophoresis analyzer, but is 30% faster, uses lower stain and destain volumes and has a touch screen user interface.



### Touch Screen

Easy to use  
interface for test  
selection and  
customization  
of parameters

### 30% Faster

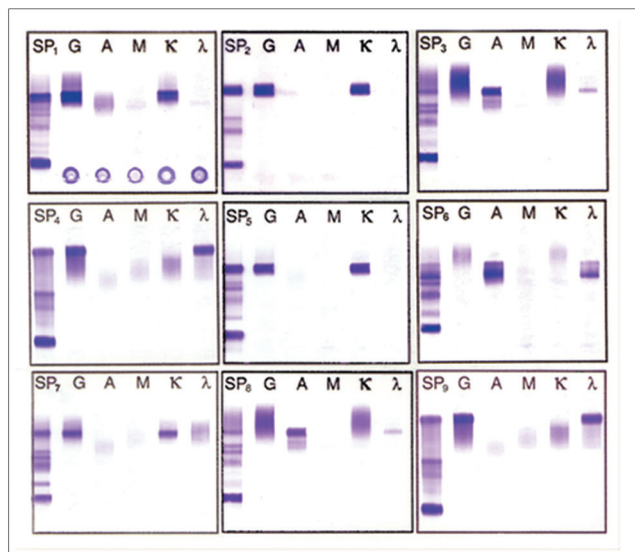
Faster processing and organized workflow means greater efficiency over previous generations of SPIFE and other brands of electrophoresis analyzers.

### Positive ID

Integrates with ESH Touch for positive ID of patient samples and electrophoresis gel.

### Accurate Sampling

Up to 100 samples per agarose gel are precisely applied. New applicator blades provide fast, clean and accurate sampling.



## ► SPIFE ImmunoFix

- Tight crisp bands for easier interpretation
- Simple multi-channel antisera application
- Antisera balanced for highest sensitivity with least blush
- Gel sizes for every workload – from one profile to 15

Cat. No. 3408 - 15 profile

Cat. No. 3409 - 9 profile

Cat. No. 3401 - 6 profile

Cat. No. 3406 - 3 profile

Cat. No. 3351 - 1/2 profile

## ► SPIFE Proteins

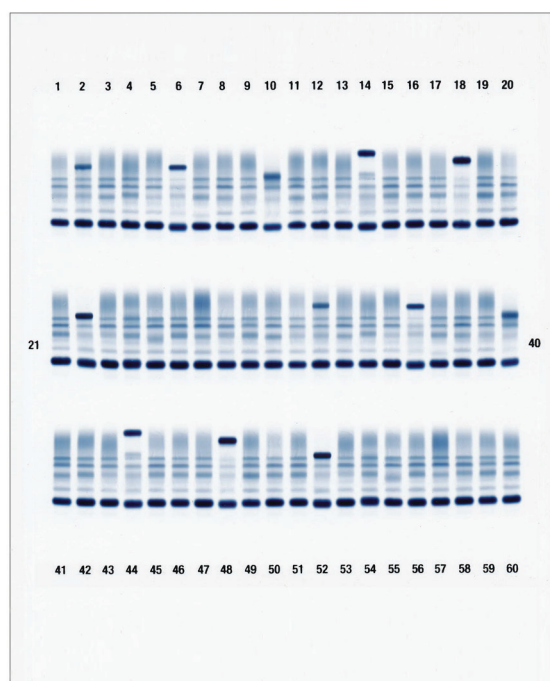
- Classic 5-band or split beta separations
- Superior resolution and sensitivity
- Serum applied neat: no concentration needed for urines
- Gel sizes for every workload – up to 100 samples per gel

### Split-Beta

Cat. No. 3398 - 100 sample  
 Cat. No. 3399 - 80 sample  
 Cat. No. 3420 - 60 sample  
 Cat. No. 3421 - 40 sample  
 Cat. No. 3422 - 20 sample  
 Cat. No. 3350 - 10/20 sample

### Classic

Cat. No. 3460 - 60 sample  
 Cat. No. 3461 - 40 sample  
 Cat. No. 3462 - 20 sample  
 Cat. No. 3405 - 10 sample



## Temperature Controlled

Peltier devices precisely regulate temperature to preserve sample integrity while providing crisp separations.

## Efficient Staining and Reagent Application

Reagent is automatically applied to gels for enzymatic assays while the online stainer provides auto staining and destaining of visible analytes.

## Complete Menu

A full menu of analytes including proteins, IFEs, hemoglobins, direct cholesterol including Lp(a)-c, isoenzymes, lipoproteins and IgG IEF, plus multiple gel sizes provide great versatility.



