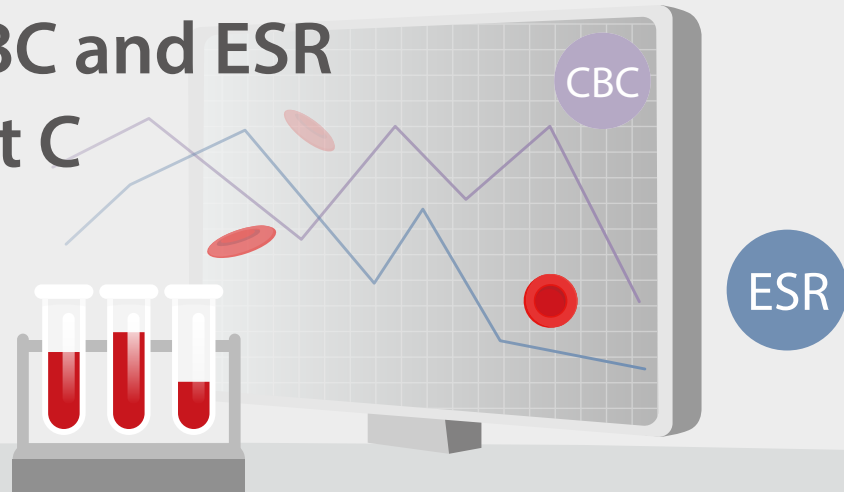


The clinical significance of all-in-one CBC and ESR analysis, Part C



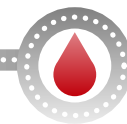
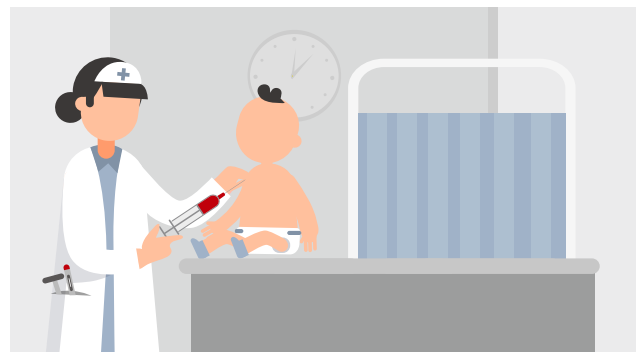
In the last two chapters, we talked about what ESR is and the applications of ESR, CRP and CBC analysis. ESR is an acute phase reactant and serves as a marker for inflammation. It correlates with disease activity and response to therapy. We understand that single tests are not adequate to confirm any diagnosis, but they do give us important clues.

Today, all these tests can be performed via an automated analyzer. You do not have to do this by yourself anymore. This helps to streamline the workflow of the laboratory and allows patients to get the diagnosis in the earliest time possible.

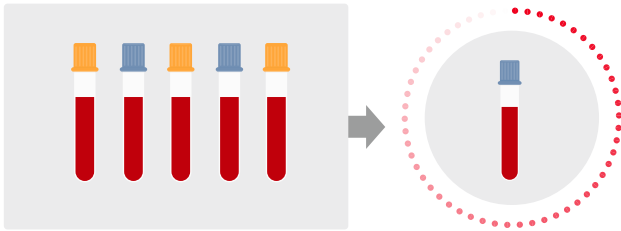
So, what are the advantages of automated measurement of ESR with CBC in one analysis from clinical laboratory perspectives?

Advantages from clinical laboratory perspectives

Reducing the volume of blood to draw from patients, especially for children and the elderly



Only one tube of blood is required for ESR and CBC tests, reducing the workload of blood drawing and labor & consumables costs



Simplified workflow

Integrated ERS machine Vs. manual ERS method in workflow	
CBC analysis first	
Registration of the samples	01
Sample loading	03
Identifying the samples to undergo ESR test	05
	02 Code scanning/ number input
	04 Analysis
	06 RCBC review and reporting
	07 Acceptance
Code scanning/ number input	07
Mixing well	08
Cap opening	09
Sample loading	10
Test	11
Cap covering	12
Sorting and back into plate	13
ESR review and reporting	14
	08 Code scanning/ number input
	09 Mixing well
	11 Cap opening
	12 Aspiration
	13 Fixation
	14 Letting stand for 1 hour
	15 ESR review and reporting
	16 Back into plate
	17 Manual report input

Followed by ESR (instrument method)

Followed by ESR (manual method)

For manual method

- Additional tubes
- Additional manpower
- Time consuming
- Potential biosafety hazards due to the blood exposure during the whole process

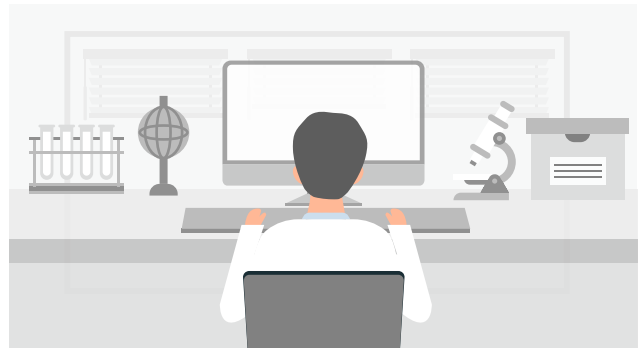
For instrument method

- Additional instrument cost
- Additional maintenance cost

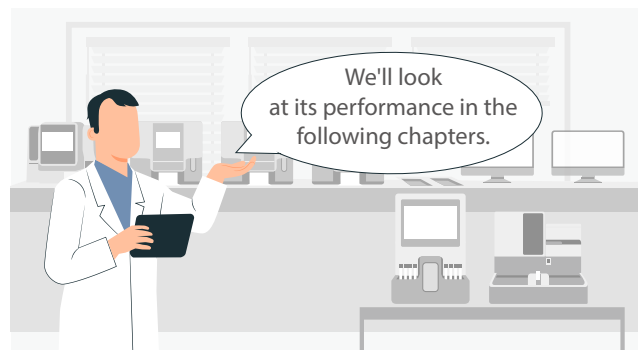
Shortening the turnaround time (TAT)



Avoiding manual input of incorrect results



CBC and other parameters as well as ESR results will be combined, and true negative samples will be automatically validated and then transmitted to the LIS. Lab technicians only need to verify the abnormal results.



Mindray has launched the new BC-700 Series, a revolutionary hematology analyzer series that incorporates both CBC and ESR tests. This series, including two open vial models BC-700/BC-720 and two autoloader models BC-760/BC-780, is designed to empower medium-volume laboratories with advanced diagnostics technologies that are applied in the premium products.

mindray

healthcare within reach

Follow Mindray on Social Media

LinkedIn



Join LabClub, a global online community
for lab professionals.



www.mindray.com

P/N: ENG-The clinical significance of all-in-one CBC and ESR analysis, Part C-210X3P-20220519
©2022 Shenzhen Mindray Bio-Medical Electronics Co.,Ltd. All rights reserved.