

# EU 8600

Fully Automated Urinalysis Line

## UA-5600 Automatic Dry Chemistry Urine Analyzer

### Principle

Photoelectric colorimetry、refractometry

### Reportable Parameters

Dry chemistry: GLU, PRO, BLD, BIL, pH, KET, VitC, URO, NIT, LEU, S.G., MCA, CRE, CA, Physics: S.G., Turb, Color

### RUO parametes

P/C, Micro A/C

### Throughput

240 T/H

### Sample loading

100 samples

### STAT

Independent auto-loading STAT position

### Strip Capacity

200 strips

### LIS

Bi-directional LIS, automatic identification of test mode

### Barcode

Internal 360° rotation barcode scanner (Optional)

## EH-2090 Auto Urine Sediment Analyzer

### Principle

Machine vision technology

### Reportable Parameters

RBC, WBC, WBCC, BACT, BACTc, BACTr, YST, SEC, NEC, CRY, Caoxm, Caoxd, URA, TRP, HYAC, UNCC, MUC, SPRM

### RUO and RBC phase parameters

POI, Normocyte(#), Normocyte(%), Poikilocyte(#), Poikilocyte(%), AcaRBC(%), GhoRBC(%), SphRBC(%), UncRBC(%)

### Sample loading

100 samples

### Focus Method

Automated focus without focus liquid

### Imaging Resolution

5 megapixels

### Throughput

Four channels, 120T/H(C Model)  
Dual channels, 80T/H(B Model)

### STAT

Independent auto-loading STAT position

### LIS

Bi-directional LIS, automatic identification of test mode

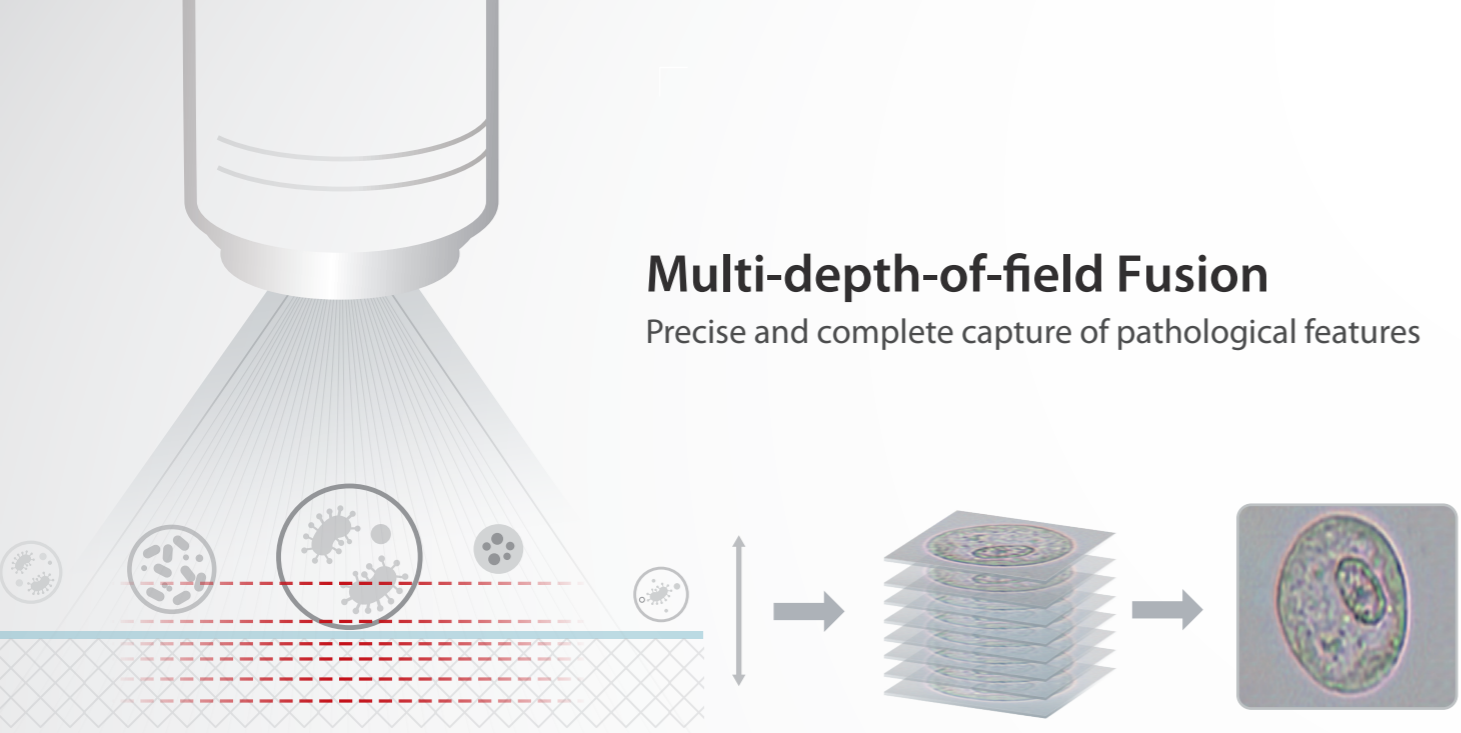
### Barcode

Internal 360° rotation barcode scanner(Optional)

# EU 8600

Fully Automated Urinalysis Line



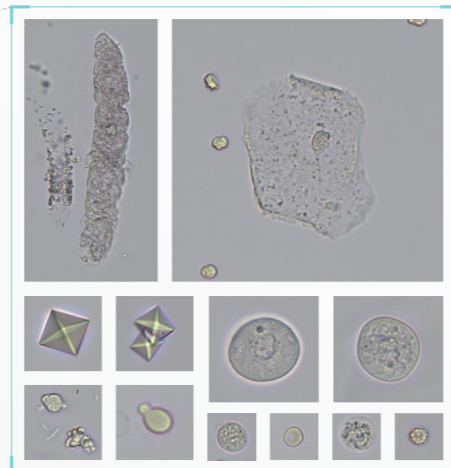
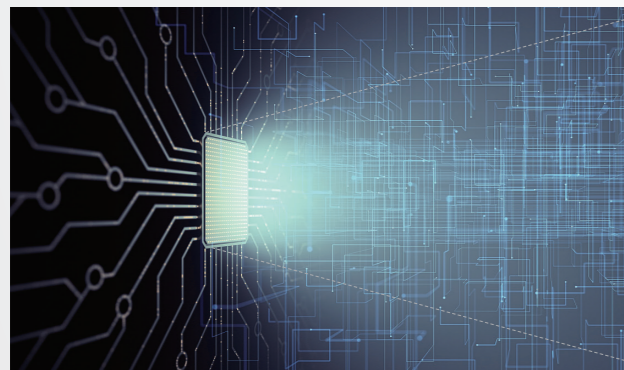


## Multi-depth-of-field Fusion

Precise and complete capture of pathological features

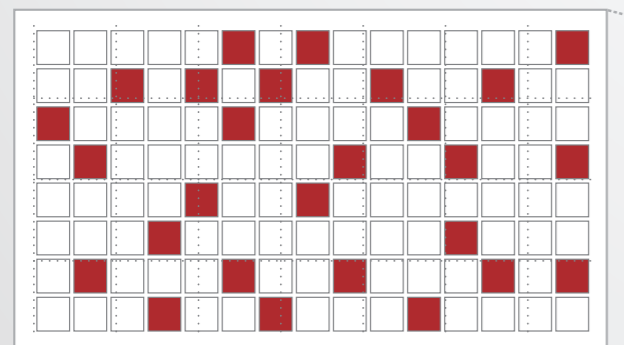
## 2K HD True-Color Imaging

Consistence with real view under microscope



## Full Field Imaging

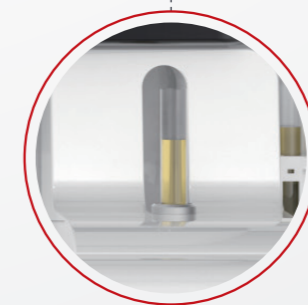
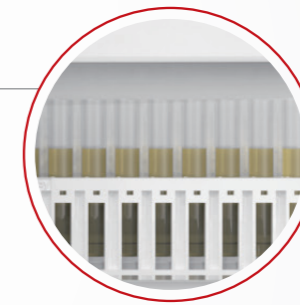
Increase on analysis volume to avoid missed diagnosis



## 100

Walk-away operation supported by continuous loading of 100 samples

Chemistry test:240T/H  
Formed element test:120T/H



## 360°

360° rotation barcode scanner,  
Automatic identification of testing  
mode based on Bi-directional LIS  
without manual intervention